

HOW TO GET TO HdM



FROM THE AIRPORT:

The S-Bahn station is at the airport, and you can find it in Terminal 1. Please follow the S-Bahn sign: **S**

Platform 2 (direction: Stuttgart / Hauptbahnhof)

Lines: **S2** (direction: Schorndorf) / **S3** (direction: Backnang)

Flughafen/Messe

- Echterdingen
- Leinfelden
- Oberaichen
- Rohr
- Vaihingen
- Österfeld

Universität



mo - fr every 15 min
weekend every 20 min



FROM THE MAIN STATION:

You can reach the S-Bahn station from the concourse.

Please follow the S-Bahn sign: **S**

Platform 101 (direction: Flughafen/Messe, Vaihingen)

Lines: **S1** (direction: Herrenberg) / **S2** (direction: Filderstadt) / **S3** (direction: Flughafen/Messe)

Stuttgart Hauptbahnhof (tief)

- Stadtmitte
- Feuersee
- Schwabstraße
- Universität

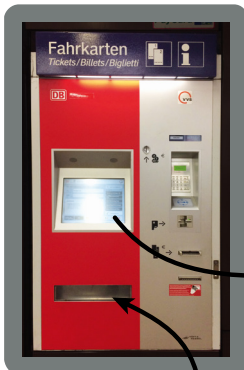


mo - fr every 5 min
weekend every 10 min

When you arrive at the station „Universität“, please take the exit „Wohngelände / Schranne“ (it's signposted). It's a short walk about 10 minutes to HdM.



WHERE / HOW TO BUY A TICKET?



You can find ticket machines at every station (but not necessarily on the platforms or on the trains). Please note, that you can not buy tickets from the driver!



- „From: airport / main station“ (normally the machine will show the location you are at)
- „To:“ - search for UNIVERSITÄT, then choose „Universität Vaihingen (Stgt.)“
- Choose a „Single ticket Adult“ and pay - your ticket will be printed

2,90 €

per trip, from the airport and from the main station

More information:
<https://en.vws.de/>

FROM THE S-BAHN STATION TO HdM:



Quelle: OpenStreetMap.de

DO YOU PLAN TO STAY LONGER?

There are daily and weekly tickets available. The prices depend on the amount of zones.

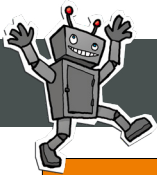
AIRPORT - CITY: 3 zones* (10, 20, 38)
daily ticket: 11,20 €
3 day ticket: not available
weekly ticket: 38,60 €

CITY - HDM: 2 zones* (10, 20)
daily ticket: 7,00 €
3 day ticket: 14,00 €
weekly ticket: 27,50 €

NETWORK: all zones*
daily ticket: 15,50 €
3 day ticket: 19,50 €
weekly ticket: 73,20 €

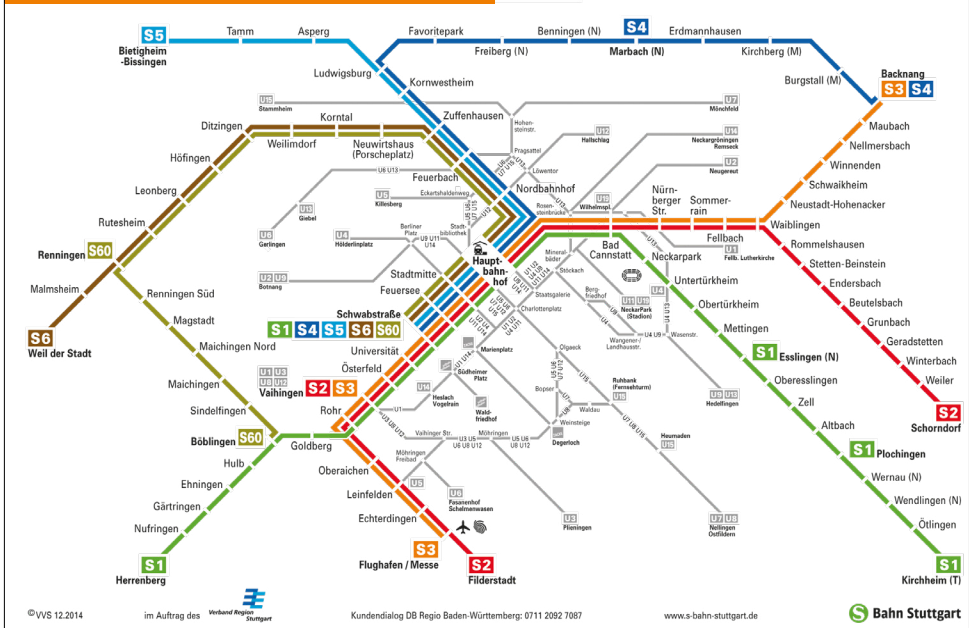


*The city center (including the main station) is in the zone 10, the area around it (including the HdM) in the zone 20, and the airport belongs to the zone 38.



PUBLIC TRANSPORT

Network of routes



TICKETS

SINGLE DAY TICKET: unlimited number of trips throughout the VVS network, for 24 hours, make sure to buy for the network "all zones", otherwise it will only be valid in the corresponding zones.

3-DAY-TICKET: an attractive offer designed for overnight guests at hotels, inns, and guesthouses within the VVS territory, as well as for visitors attending conferences or meetings, make sure to buy for the network "all zones".

3-day-tickets must be signed with the full name and validated by stamping it at the ticket validator inside the station before the first ride.

They are for sale in numerous hotels, inns, and guest houses at reception, or by providing written evidence of an overnight hotel stay or conference registration at the tourism information booth i-punkt (Stuttgart, Königstraße 1a, across from the main railroad station), phone +49 711 22 28-0.

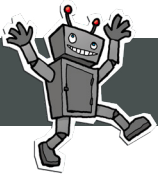
WEEKLY TICKET: unlimited number of trips throughout the VVS network. Valid for 7 days, starting on the day of purchase, make sure to buy for the network "all zones".

<https://en.vvs.de/>

IF YOU NEED A TAXI YOU CAN CALL:
+49 711 551 00 00.

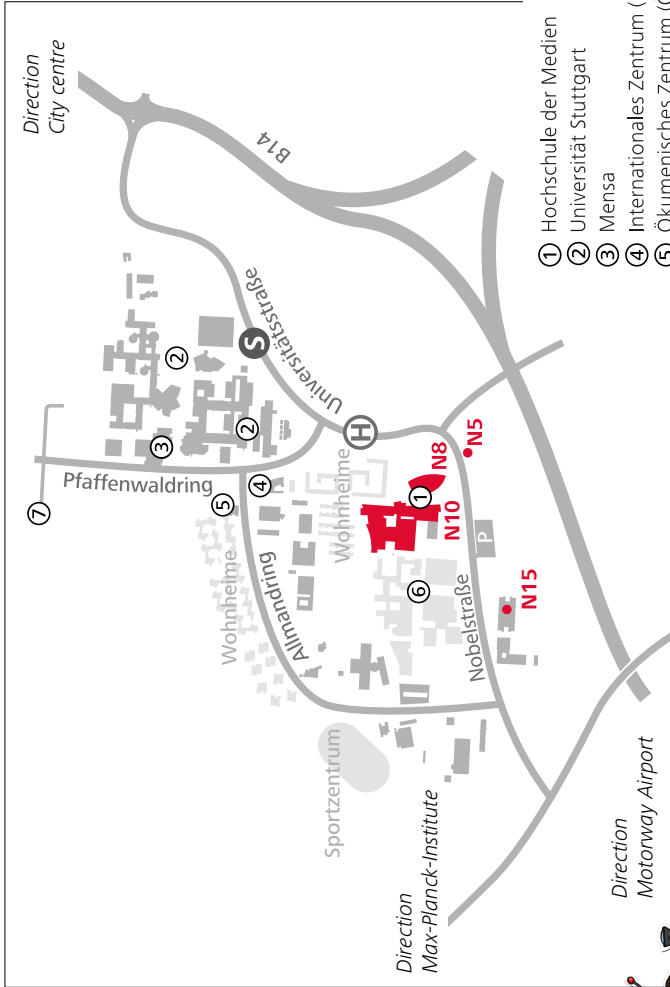


For easy ticket purchases, please download the VVS App
<http://www.en.vvs.de/vvs-app/>



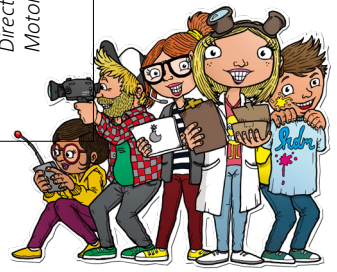
DIRECTION SKETCH

Stuttgart Media University
Nobelstraße 10
D-70569 Stuttgart



- ① Hochschule der Medien
- ② Universität Stuttgart
- ③ Mensa
- ④ Internationales Zentrum (IZ)
- ⑤ Ökumenisches Zentrum (ÖZ)
- ⑥ Fraunhofer Gesellschaft
- ⑦ Deutsches Zentrum für Luft- und Raumfahrt e.V.

- S** S-Bahn station „Universität“
City centre 20 min
Airport 20 min
- H** Bus stop „Schranne“



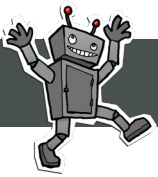


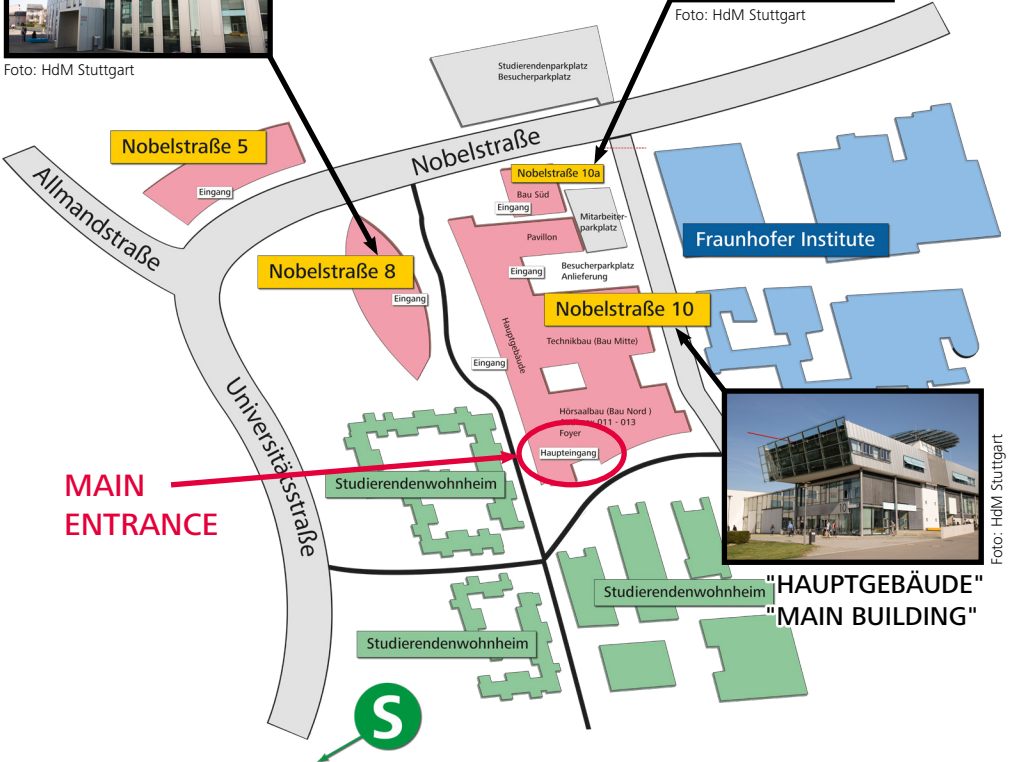
Foto: HdM Stuttgart

"ZITRONENSCHNITZ"
"LEMON WEDGE"



Foto: HdM Stuttgart

"WÜRFEL"
"CUBE"



**MAIN
ENTRANCE**

Fraunhofer Institute

"HAUPTGEBÄUDE"
"MAIN BUILDING"

Foto: HdM Stuttgart

**HAUPTGEBÄUDE /
MAIN BUILDING:**

International Office
Rooms 123 - 125

International Hub
Room 204

WÜRFEL / CUBE:

All rooms, that
start with "S"

**ZITRONENSCHNITZ
/ LEMON WEDGE:**

All rooms that
start with "i"

